

# PowerEdge M620



## Technical Guide



A feature-rich 2-socket blade server, the PowerEdge M620 is designed for maximum performance with extreme density.



This document is for informational purposes only. Dell reserves the right to make changes without further notice to any products herein. The content provided is as is and without express or implied warranties of any kind.

Dell, the DELL logo, PowerEdge, EqualLogic, PowerVault, OpenManage and KACE are trademarks of Dell, Inc. Intel and Xeon are registered trademarks of Intel Corporation in the U.S. and other countries. Microsoft, Windows, Windows Server, ActiveX, Internet Explorer, and Hyper-V are either registered trademarks or trademarks of Microsoft Corporation in the United States and/or other countries. Novell and SUSE are registered trademarks of Novell, Inc. in the United States and other countries. IBM, Tivoli, and Netcool are registered trademarks of IBM in the United States. ENERGY STAR and the ENERGY STAR mark are registered U.S. marks. Other trademarks and trade names may be used in this document to refer to either the entities claiming the marks and names or their products. Dell disclaims proprietary interest in the marks and names of others.



©Copyright 2013 Dell Inc. All rights reserved. Reproduction or translation of any part of this work beyond that permitted by U.S. copyright laws without the written permission of Dell Inc. is unlawful and strictly forbidden.

September 2013 | Version 5.0



# Table of contents

---

1	System overview.....	5
	Introduction.....	5
	Accomplish more .....	5
	Designed for your hyper-dense environments.....	5
	The PowerEdge M-series blade server line.....	5
	New technologies .....	6
2	System features .....	7
	Comparison of PowerEdge systems .....	7
	Specifications .....	8
3	Module views and features.....	10
	Module views.....	10
	Module features.....	12
	LCD control panel .....	12
	Quick Resource Locator .....	12
	M1000e chassis enclosure features .....	13
4	Processors .....	14
	Processor features.....	14
	Supported processors.....	15
	Chipset.....	16
5	Memory.....	17
	Supported memory .....	17
	Memory configurations .....	18
	Memory capacity options .....	18
	Flexible memory configuration.....	18
	Memory speed .....	19
	Memory RAS features.....	20
6	Storage .....	21
	Internal storage .....	21
	Supported hard drives.....	21
	Express Flash drives.....	21
	Storage controllers.....	22
	Supported RAID controllers.....	22
	RAID controller feature support.....	22
7	Networking and mezzanine cards .....	24
	Select Network Adapters.....	24
	System management integration .....	25
	Mezzanine cards .....	26
8	Power, thermal and acoustics .....	27
	Power consumption and energy efficiency.....	27
	Power supply units .....	28
	Thermal and acoustics.....	28
	Thermal design .....	28
	Acoustical performance .....	29
9	Operating systems and virtualization .....	30
	Supported operating systems.....	30
10	Dell OpenManage systems management.....	32
	OpenManage systems management .....	33
	iDRAC7 with Lifecycle Controller .....	33
	Agent-based systems management .....	35
	Dell consoles .....	36



OpenManage systems management tools and utilities.....	36
Integration with third-party consoles.....	37
OpenManage connections with third-party consoles .....	37
Dell server management operations.....	38
Appendix A. Additional specifications.....	40
Appendix B. Standards compliance .....	43
Appendix C. Additional resources.....	45
Appendix D. System board block diagram .....	47

## Tables

Table 1. New technologies .....	6
Table 2. Comparing the PowerEdge M610, M710HD and M620.....	7
Table 3. Technical specifications.....	8
Table 4. Module features.....	12
Table 5. Supported processors.....	15
Table 6. Memory technologies supported.....	17
Table 7. DIMMs supported.....	18
Table 8. Memory speed capabilities .....	19
Table 9. Memory RAS features .....	20
Table 10. Hard-drive backplane options .....	21
Table 11. Supported hard drives .....	21
Table 12. RAID controller feature support .....	22
Table 13. Supported Select Network Adapter options and features .....	25
Table 14. Supported mezzanine cards.....	26
Table 15. Power tools and technologies .....	27
Table 16. M620 acoustical performance.....	29
Table 17. Primary operating system support .....	30
Table 18. Virtual guest operating system support .....	31
Table 19. Virtualization support .....	31
Table 20. iDRAC7 with Lifecycle Controller functions and benefits.....	33
Table 21. Feature comparison for iDRAC7 Enterprise and iDRAC7 Express for Blades .....	34
Table 22. One-to-one and one-to-many operations .....	39
Table 23. Supported video modes.....	40
Table 24. Environmental specifications .....	41
Table 25. Industry standards documentation.....	43
Table 26. Additional resources .....	45

## Figures

Figure 1. M620 front view .....	10
Figure 2. M1000e chassis enclosure with M620 blades .....	11
Figure 3. M620 internal module view.....	11
Figure 4. QRL code located on module .....	13
Figure 5. Blade network daughtercard (NDC) .....	24
Figure 6. Dell systems management solutions.....	32
Figure 7. Systems management server lifecycle .....	38
Figure 8. Module dimensions.....	40
Figure 9. M620 system board block diagram .....	47



# 1 System overview

## Introduction

Designed for your taxing workloads, such as email, database and virtual environments, the Dell™ PowerEdge™ M620 blade server is an ideal blend of density, performance, efficiency and scalability. The M620 delivers unprecedented memory density and superb performance with no compromise on enterprise-class features.

### Accomplish more

Bring impressive new capabilities to your data center with the PowerEdge M620, which offers a memory capacity of up to 768GB of RAM along with scalable I/O capabilities. Powered by Intel® Xeon® E5-2600 or E5-2600 v2 processors and Dell's unique Select Network Adapter, our flexible NIC technology, the M620 provides the performance you require and allows you to allocate your network throughput to match your application needs.

### Designed for your hyper-dense environments

Dell's exclusive failsafe virtualization technology provides redundant media for hypervisor failover to keep your critical virtual environments running. Your virtualization environments demand high memory capacity in order to maximize the number of virtual machines per server, and the PowerEdge M620 was designed with this in mind. If you are running high-performance computing (HPC) application clusters, the M620 provides you with outstanding computational density and powerful processing capability in a compact form factor.

Simplified systems management, without compromise The Dell OpenManage™ systems management portfolio includes Integrated Dell Remote Access Controller 7 (iDRAC7) with Lifecycle Controller. This embedded feature helps IT administrators manage Dell servers in physical, virtual, local and remote environments, operating in-band or out-of-band, with or without a systems management software agent installed. OpenManage iDRAC with Lifecycle Controller integrates and connects to leading third-party systems management solutions (such as those from Microsoft, VMware and BMC Software), so users can maintain a single point of control and capitalize on an existing systems management investment. OpenManage simplifies the lifecycle of deploying, updating, monitoring and maintaining Dell PowerEdge servers.

### The PowerEdge M-series blade server line

Implement the right combination of features and performance scalability with the PowerEdge M-series blade servers, which can handle tough workloads in a data center of any size. In addition to the world-class management features provided in all PowerEdge servers, the M620 also takes advantage of the capabilities of the Dell PowerEdge M1000e's Chassis Management Controller (CMC). The CMC allows M-series blades to be managed individually or as groups, in single or multiple chassis, and within a data center or in multiple geographically dispersed locations around the globe without requiring an agent or additional hardware. PowerEdge M-series blade servers use the redundant power, cooling and networking infrastructure provided by the M1000e blade enclosure, which is exceptionally easy to deploy and manage and maximizes power and cooling efficiency.



## New technologies

A number of new technologies are featured on the PowerEdge M620 system, as shown in Table 1.

**Table 1. New technologies**

New technologies	Detailed descriptions
<b>Intel Xeon processor E5-2600 and E5-2600 v2 product families</b>	This new family of Intel processors has embedded PCI Express® (PCIe) lanes for improved I/O performance and additional new features. See the Processors section for details.
<b>Intel C602 series chipset</b>	The Intel Platform Controller Hub (PCH) chip is implemented on the M620.
<b>LRDIMM</b>	This new memory option, load reduced DIMM (LRDIMM), is designed with a buffer chip (or chips) to replace the register to help minimize loading. LRDIMMs can increase overall server system memory capacity and speed. See the Memory section for more information.
<b>Flexible LOM</b>	Dell's Select Network Adapter options allow you choose the right network fabric without using up a valuable mezzanine card slot. See the Networking and mezzanine cards section for details.
<b>Next-generation PERC options</b>	The M620 supports new Dell PERC controller cards with improved functionality and faster performance. See the Storage section for details.
<b>PERC S110 software RAID solution</b>	This new software RAID solution supports RAID 0 and 1. See the Storage section for details.
<b>Express Flash drives</b>	Dell Express Flash PCIe SSDs provide fast performance without requiring processor resources or capturing DRAM. The M620 supports up to two Express Flash PCIe SSDs. See the Storage section for details.
<b>iDRAC7 with Lifecycle Controller</b>	The new embedded system management solution for Dell servers features hardware and firmware inventory and alerting, in-depth memory alerting, faster performance, a dedicated gigabit port and many more features. See the Systems management section for details.
<b>Advanced power management</b>	The M620 supports advanced power monitoring and power capping tools that can help manage power consumption in the data center.
<b>Failsafe hypervisors</b>	The internal dual SD module enables Dell's unique Failsafe Virtualization architecture, ensuring uptime by providing failover capability for embedded hypervisors, such as VMware® vSphere® ESXi™.
<b>Dell Fresh Air cooling</b>	Dell has tested and validated an integrated data center solution that enables you to operate at higher temperatures or even chiller-less. See the Power, thermal and acoustics section for details.



## 2 System features

Compared to the previous generation of Dell PowerEdge blade servers, the M620 has more memory, processor cores and networking options than ever before. Features include DDR3 memory, PCIe 3.0, a network daughtercard (NDC), dual internal SD module and Dell's next-generation iDRAC solution known as iDRAC7 Enterprise with Lifecycle Controller.

### Comparison of PowerEdge systems

The PowerEdge M620 is a replacement for the predecessor M610 and M710HD systems, three systems that are compared in Table 2. For the latest information on supported features, visit [Dell.com/PowerEdge](http://Dell.com/PowerEdge).

**Table 2. Comparing the PowerEdge M610, M710HD and M620**

Feature	PowerEdge M610	PowerEdge M710HD	PowerEdge M620
<b>Chassis; enclosure</b>	Half-height blade; PowerEdge M1000e Blade Enclosure	Half-height blade; PowerEdge M1000e Blade Enclosure	Half-height blade; PowerEdge M1000e Blade Enclosure
<b>Processors</b>	Intel Xeon processors 5500 and 5600 series	Intel Xeon processors 5500 and 5600 series	Intel Xeon processor E5-2600 and E5-2600 v2 product families
<b>Internal interconnect</b>	Intel QuickPath Interconnect	Intel QuickPath Interconnect	Intel QuickPath Interconnect
<b>Memory</b>	12 x DDR3 RDIMM and UDIMM	18 x DDR3 RDIMM and UDIMM	24 x DDR3 RDIMM, UDIMM and LRDIMM
<b>Hard drive bays (hot plug)</b>	2 x 2.5"	2 x 2.5"	2 x 2.5"
<b>Express Flash drives</b>	Not supported	Not supported	Up to 2
<b>I/O slots</b>	2 PCIe 2.0 x8 mezzanine card slots	2 PCIe 2.0 x8 mezzanine card slots	2 x PCIe 3.0 x8 mezzanine card slots
<b>Optional SD port</b>	Yes	Yes	Yes (redundant hypervisor + vFlash media)
<b>Dell OpenManage Systems Management</b>	Dell OpenManage Dell Management Console Lifecycle Controller 1.x iDRAC6 (Express or Enterprise) with Lifecycle Controller 1.x, CMC 3.x	Dell OpenManage Dell Management Console Lifecycle Controller 1.x iDRAC6 (Express or Enterprise) with Lifecycle Controller 1.x, CMC 3.x	OpenManage Essentials OMSA Agent OpenManage Power Center (requires iDRAC7 Enterprise with Lifecycle Controller) CMC 4.x (available with the M1000e Modular Blade Enclosure) OpenManage Integrations and Connections iDRAC7 Express for Blades with Lifecycle Controller (standard option)



## Specifications

Table 3 lists the technical specifications for the PowerEdge M620 blade server. For the latest information on supported features, visit [Dell.com/PowerEdge](http://Dell.com/PowerEdge).

**Table 3. Technical specifications**

Feature	Technical specification
<b>Form factor; enclosure</b>	Half-height blade; Dell PowerEdge M1000e Blade Enclosure
<b>Processors</b>	Intel Xeon processor E5-2600 and E5-2600 v2 product families
<b>Internal interconnect</b>	Intel QuickPath Interconnect (QPI): 6.4GT/s, 7.2GT/s, 8.0GT/s
<b>Cache</b>	2.5MB per core; core options: 4, 6, 8, 10, 12
<b>Memory<sup>1</sup></b>	Up to 768GB (24 DIMM slots): 2GB/4GB/8GB/16GB/32GB DDR3 up to 1866MT/s Up to 1.5TB (24 DIMM slots): 64GB DDR3 LRDIMM up to 1600MT/s (with Intel Xeon processor E5-2600 v2 product family only)
<b>Chipset</b>	Intel C602
<b>Video</b>	Integrated Matrox <sup>®</sup> G200
<b>Primary storage</b>	<b>Hot-plug hard drive options:</b> Up to two 2.5" Express Flash PCIe SSD, SATA HDD/SSD, or SAS HDD/SSD <b>External storage:</b> For information about Dell external storage options, visit <a href="http://Dell.com/Storage">Dell.com/Storage</a>
<b>USB ports</b>	2 front, 1 internal
<b>I/O mezzanine card options</b>	<b>1Gb/10Gb adapters:</b> Broadcom <sup>®</sup> 5719 Serdes 4P 1Gb Intel I350 Serdes 4P 1Gb Broadcom 57810S-k 2P 10Gb Intel X520-x/k 2P 10Gb Qlogic <sup>®</sup> QME8262-k 2P 10Gb Brocade <sup>®</sup> BR1741M-k 2P 10Gb Mellanox <sup>®</sup> ConnectX <sup>®</sup> -3 dual-port 10GbE KR blade <b>Fibre channel:</b> QLogic QME2662 2P 16Gb Emulex <sup>®</sup> LPm16002B-D 2P 16Gb QLogic QME2572 2P 8Gb Emulex LPe1205-M 2P 8Gb <b>InfiniBand™:</b> Mellanox ConnectX-3 dual port FDR10 40 Gb Mellanox ConnectX-3 dual port QDR 40Gb Mellanox ConnectX-3 dual port FDR 56Gb
<b>I/O slots</b>	Fully populated mezzanine card slots and switch modules yield 3 redundant I/O fabrics per blade.





Feature	Technical specification
<b>Dell Select Network Adapter (network daughtercard) options</b>	2 x 10GbE Broadcom 57810S-k 2 x 10GbE Intel X520-k 2 x 10GbE QLogic QMD8262-k
<b>RAID controller</b>	<b>Internal controllers:</b> PERC S110 (software RAID) PERC H310 PERC H710 PERC H710P
<b>Power supplies and fans</b>	Supplied by M1000e blade enclosure
<b>Dell OpenManage Systems Management (Agent-free or with OpenManage Server Administrator [OMSA] Agent)</b>	<ul style="list-style-type: none"> <li>• OpenManage Essentials</li> <li>• OMSA Agent</li> <li>• OpenManage Power Center (requires iDRAC7 Enterprise with Lifecycle Controller)</li> <li>• CMC 4.x (available with the M1000e Modular Blade Enclosure)</li> <li>• OpenManage Integrations and Connections: <ul style="list-style-type: none"> <li>– OpenManage Integration Suite for Microsoft® System Center</li> <li>– OpenManage Integration for VMware vCenter</li> <li>– Connections for HP® Operations Manager, IBM® Tivoli® Netcool® and CA Network and Systems Management</li> </ul> </li> <li>• iDRAC7 Express for Blades with Lifecycle Controller (standard option) <ul style="list-style-type: none"> <li>– Upgrade to iDRAC7 Enterprise with Lifecycle Controller</li> <li>– Upgrade to 8GB vFlash media or 16GB vFlash media for iDRAC7 Enterprise with Lifecycle Controller</li> <li>– Trial evaluation available for iDRAC7 Enterprise with Lifecycle Controller</li> </ul> </li> </ul>
<b>Operating systems</b>	<p>Microsoft Windows Server® 2012  Microsoft Windows Server 2012 R2 (includes Hyper-V®)  Microsoft Windows Server 2008 R2 SP1, x64 (includes Hyper-V)  Novell® SUSE® Linux® Enterprise Server  Red Hat® Enterprise Linux</p> <p><b>Virtualization options:</b>  Citrix® XenServer®  Red Hat Enterprise Virtualization®  VMware vSphere ESXi™</p> <p>For more information on the specific versions and additions, visit <a href="http://Dell.com/OSsupport">Dell.com/OSsupport</a>.</p>
<b>Embedded hypervisor</b>	Two internal SD cards dedicated for hypervisor One dedicated for vFlash media support

Earning ENERGY STAR® 2.0 Server designation, the Dell PowerEdge M620 Blade Server is qualified in the Dell M1000e chassis.

For more information about the Dell blade solution, see the [PowerEdge M1000e Technical Guide](#) or the [PowerEdge M1000e Blade Chassis Spec Sheet](#).

<sup>1</sup>GB means 1 billion bytes and TB equals 1 trillion bytes; actual capacity varies with preloaded material and operating environment and will be less



### 3 Module views and features

The Dell PowerEdge M620 implements a new module design that supports up to 24 DIMMS and two processors. The M620 is a half-height blade server that requires a PowerEdge M1000e chassis to operate. It occupies one slot vertically in the M1000e for a maximum of 16 blade servers in one M1000e chassis. The M620 can be mixed with other existing Dell blades of half-height and full-height form factors.

The M620 is available in two module designs with different heat sinks and maximum number of supported DIMM slots, including the following:

- 57 mm heatsink: for 95W and under processors and maximum RAM expandability (up to 24 DIMMs)
- 77 mm heatsink: for 115W and 130W processors and RAM expandability up to 20 DIMMs
- 97 mm heatsink: for Dell Fresh Air configurations supporting 95W and under processors and up to 16 DIMMs

The following sections provide external and internal views of the system and describe the module features. For more detailed information on features and descriptions for the M620, see the *Dell PowerEdge M620 Systems Owner's Manual* on [Dell.com/Support/Manuals](http://Dell.com/Support/Manuals).

#### Module views

As shown in Figure 1, the M620 module supports up to two front-accessible, hot-plug hard drives and two USB ports.

**Figure 1.** M620 front view



The chassis design of the M620 is optimized for easy access to components and for airflow for effective and efficient cooling. Figure 2 shows the M1000e chassis enclosure populated with M620 modules.

**Figure 2. M1000e chassis enclosure with M620 blades**



The M620 module shown in Figure 3 supports up to 24 DIMMS, two processors and many other features that are described in this guide.

**Figure 3. M620 internal module view**



For additional system views, see the *Dell PowerEdge M620 Systems Owner's Manual* on [Dell.com/Support/Manuals](http://Dell.com/Support/Manuals).



## Module features

Table 4 lists the modules features for the M620 system. For additional information on these features, see the *Dell PowerEdge M620 Systems Owner's Manual* on [Dell.com/Support/Manuals](http://Dell.com/Support/Manuals).

**Table 4. Module features**

Feature	Description
<b>USB connectors</b>	2 front-accessible USB connectors
<b>Status indicator</b>	Indicator for M620 power status
<b>Hard drives</b>	2 front-accessible, hot-plug, 2.5-inch drives; see the Storage section for details
<b>Hard drive activity LEDs</b>	Indicate the status and activity
<b>Blade handle release button</b>	Release button on the front handle of the blade server
<b>USB key</b>	Internal USB connector for a USB flash memory key that can be used as a boot device, security key, or mass storage device
<b>Trusted Platform Module (TPM)</b>	TPM is used to generate/store keys, protect/authenticate passwords and create/store digital certificates; it also supports the Intel Xeon TXT functionality.
<b>Quick Resource Locator (QRL)</b>	This code on the chassis can be scanned by a smartphone application to access additional information and resources for the server, including videos, reference materials, service tag information and Dell contact information.

### LCD control panel

The M1000e chassis enclosure LCD control panel is located on the front of the M1000e chassis to provide user access to buttons, display and I/O interfaces. For more information on the M1000e LCD control panel, see the *Dell PowerEdge Modular Systems Hardware Owner's Manual* on [Dell.com/Support/Manuals](http://Dell.com/Support/Manuals).

### Quick Resource Locator

A useful feature included with Dell PowerEdge 12<sup>th</sup>-generation servers is the Quick Resource Locator (QRL) — a model-specific Quick Response (QR) code that is located on the server (see Figure 4). Use your smartphone to access the Dell QRL application to learn more about the server.



**Figure 4.** QRL code located on module



This QRL code allows you to:

- View step-by-step videos, including overviews of system internals and externals, as well as detailed, concise, task-oriented videos and installation wizards
- Locate reference materials, including searchable owner's manual content, LCD diagnostics and an electrical overview
- Look up your service tag so you can quickly gain access to your specific hardware configuration info and warranty information
- Contact Dell directly (by link) to get in touch with technical support and sales teams and provide feedback to Dell

These codes provide an easy way to retrieve the critical support information you need when you need it, making you more efficient and effective in managing your hardware.

### M1000e chassis enclosure features

For more information on the M1000e chassis enclosure features, see the *Dell PowerEdge Modular Systems Hardware Owner's Manual* on [Dell.com/Support/Manuals](http://Dell.com/Support/Manuals)



## 4 Processors

The Dell PowerEdge M620 blade server features the exceptional performance, value and power efficiency of the Intel Xeon processor E5-2600 v2 product family. With up to 12 cores and 30MB cache, E5-2600 v2 processors have the capacity to deliver performance gains of up to 40 percent over previous-generation E5-2600 processors. No matter your constraint — floor space, power or budget — E5-2600 v2 processors can help you achieve more computational horsepower, in the same footprint, with better security and power efficiency.

### Processor features

The Intel Xeon processor E5-2600 v2 product family has powerful new features and improves upon many of the capabilities of the predecessor Intel Xeon processor E5-2600 series:

- With up to four additional cores, 10MB more cache and a 17 percent increase in memory speeds, E5-2600 v2 processors may boost performance by up to 40 percent in Dell PowerEdge server platforms.
- Support for DDR3 1866MT/s memory provides faster connections throughout the system.
- Up to 24 DIMM slots and support for up to 32GB DIMMs enable memory capacity of 768GB. Dell's exclusive Fault Resilient Memory technology provides a protected memory zone for a hypervisor without consuming half of the total RAM in the system.
- In combination with Fault Resilient Memory, E5-2600 v2 processors offer Failsafe Virtualization for unsurpassed industry protection for virtual machines.
- Intel Secure Key and Intel OS Guard deliver faster and more secure encryption.
- Advanced Programmable Interrupt Controller virtualization (APICv) improves virtualization performance by reducing virtual machine (VM) exits, thereby reducing overhead required to service every APIC interrupt.
- Intel Integrated PCIe 3.0 provides up to 40 lanes per socket.
- Intel Turbo Boost Technology 2.0 delivers up to double the boost of the previous generation turbo technology.
- Intel Data Direct I/O (DDIO) allows I/O traffic to skip the main system memory and be directed straight to the processor cache, which can provide a significant reduction in latency as well as allowing memory to remain in a low-power state.
- Intel Advanced Vector Extensions offer up to double the floating point operations per clock cycle by doubling the length of registers, which can be useful in the large-number calculations that are integral to many technical, financial and scientific computing problems.
- Dell Processor Acceleration Technology (DPAT), enabled through the BIOS, minimizes transition duration when the processor functions in turbo mode, thereby decreasing jitter and allowing for lesser latency.

For more information on the Intel Xeon processor E5-2600 and E5-2600 v2 product families, visit [Intel.com](http://Intel.com).



## Supported processors

The M620 supports up to two processors with up to twelve cores per processor. Table 5 lists the Intel Xeon processors supported by the PowerEdge M620. For the latest information on supported processors, visit [Dell.com/PowerEdge](http://Dell.com/PowerEdge).

**Table 5. Supported processors**

Model	Speed	Cache	QPI	Cores	Turbo	TDP
<b>E5-2697v2</b>	2.7GHz	30M	8.0GT/s	12	Yes	130W
<b>E5-2695v2</b>	2.4GHz	30M	8.0GT/s	12	Yes	115W
<b>E5-2690</b>	2.9Ghz	20M	8.0GT/s	8	Yes	135W
<b>E5-2690v2</b>	3.0Ghz	25M	8.0GT/s	10	Yes	130W
<b>E5-2680</b>	2.7Ghz	20M	8.0 GT/s	8	Yes	130W
<b>E5-2680v2</b>	2.8Ghz	25M	8.0GT/s	10	Yes	115W
<b>E5-2670</b>	2.6GHz	20M	8.0GT/s	8	Yes	115W
<b>E5-2670v2</b>	2.5GHz	25M	8.0GT/s	10	Yes	115W
<b>E5-2667</b>	2.9GHz	15M	8.0GT/s	6	Yes	130W
<b>E5-2667v2</b>	3.0GHz	20M	8.0GT/s	8	Yes	130W
<b>E5-2665</b>	2.4GHz	20M	8.0GT/s	8	Yes	115W
<b>E5-2660</b>	2.2GHz	20M	8.0GT/s	8	Yes	95W
<b>E5-2660v2</b>	2.2GHz	25M	8.0GT/s	10	Yes	95W
<b>E5-2650L</b>	1.8GHz	20M	8.0GT/s	8	Yes	70W
<b>E5-2650Lv2</b>	1.7GHz	25M	8.0GT/s	10	Yes	60W
<b>E5-2650</b>	2.0GHz	20M	8.0GT/s	8	Yes	95W
<b>E5-2650v2</b>	2.6GHz	20M	8.0GT/s	8	Yes	95W
<b>E5-2643</b>	3.3GHz	10M	8.0GT/s	4	Yes	130W
<b>E5-2643v2</b>	3.3GHz	15M	8.0GT/s	6	Yes	130W
<b>E5-2640</b>	2.5GHz	15M	7.2GT/s	6	Yes	95W
<b>E5-2640v2</b>	2.0GHz	20M	7.2GT/s	8	Yes	95W
<b>E5-2637</b>	3.0GHz	5M	8.0GT/s	2	Yes	80W
<b>E5-2637v2</b>	3.5GHz	10M	8.0GT/s	4	Yes	130W
<b>E5-2630L</b>	2.0GHz	15M	7.2GT/s	6	Yes	60W



Model	Speed	Cache	QPI	Cores	Turbo	TDP
<b>E5-2630Lv2</b>	2.4GHz	15M	7.2GT/s	6	Yes	60W
<b>E5-2630</b>	2.3GHz	15M	7.2GT/s	6	Yes	95W
<b>E5-2630v2</b>	2.6GHz	15M	7.2GT/s	6	Yes	80W
<b>E5-2620</b>	2.0GHz	15M	7.2GT/s	6	Yes	95W
<b>E5-2620v2</b>	2.1GHz	15M	7.2GT/s	6	Yes	80W
<b>E5-2609</b>	2.4GHz	10M	6.4GT/s	4	No	80W
<b>E5-2609v2</b>	2.5GHz	10M	6.4GT/s	4	No	80W
<b>E5-2603</b>	1.8GHz	10M	6.4GT/s	4	No	80W
<b>E5-2603v2</b>	1.8GHz	10M	6.4GT/s	4	No	80W

For information on processor installation and configuration, see the *Dell PowerEdge M620 Systems Owner's Manual* on [Dell.com/Support/Manuals](http://Dell.com/Support/Manuals).

## Chipset

The Intel C602 chipset is implemented on the PowerEdge M620. For more information, visit [Intel.com](http://Intel.com).





## 5 Memory

More memory options are available than ever before with the Dell PowerEdge M620 — greater capacities, higher frequencies and more flexibility. The M620 supports up to 768GB of memory and speeds up to 1866MT/s, providing high performance in a variety of applications. High memory density means there is no compromise when it comes to virtualization.

Increase your uptime and reduce data loss, due to Dell's focus on reliability, availability and serviceability (RAS) features. RAS aids in the rapid and accurate diagnosis of faults that require service, increasing your memory reliability. System uptime is reinforced with RAS features like memory mirroring, sparing and many others.

In addition to supporting existing UDIMM and RDIMM technologies, the M620 supports load reduced DIMMs (LRDIMMs), which use a buffer to reduce memory loading and allow for greater density, allowing for the maximum platform memory capacity.

### Supported memory

Table 6 lists the memory technologies supported by the M620.

**Table 6. Memory technologies supported**

Feature	UDIMM	RDIMM	LRDIMM
Register	No	Yes	Yes
Buffer	No	No	Yes
Frequencies*	1600MT/s	1333, 1600 or 1866MT/s	1333, 1600 or 1866MT/s
Ranks supported	1	1, 2 or 4	4
Capacity per DIMM	4GB	4, 8, 16, or 32GB	32GB
Maximum DIMMs per channel	2	3	3
DRAM technology	x8	x4 or x8	x4
Temperature sensor	Yes	Yes	Yes
Error Correction Code (ECC)	Yes	Yes	Yes
Single Device Disable Code (SDDC)	Yes (with advanced ECC mode)	Yes	Yes
Address parity	Yes	Yes	Yes

\*Although the M620 supports DIMM speeds lower than 1333MT/s, you can only purchase this system with DIMM speeds of 1333MT/s, 600MT/s and 1866MT/s on [Dell.com/PowerEdge](http://Dell.com/PowerEdge).



Table 7 lists the DIMMs that are supported on the M620. For the latest information on supported memory, visit [Dell.com/PowerEdge](http://Dell.com/PowerEdge).

**Table 7. DIMMs supported**

Capacity (GB)	Speed (MT/s)	Type	Ranks per DIMM	Data width	SDDC support	Voltage
4	1866	RDIMM	1	x8	Advanced ECC	1.5
4	1600	RDIMM	1	x8	Advanced ECC	1.35
4	1600	UDIMM	1	x8	Advanced ECC	1.35
8	1866	RDIMM	1	x4	All modes	1.5
8	1600	RDIMM	1	x4	All modes	1.35
16	1866	RDIMM	2	x4	All modes	1.5
16	1600	RDIMM	2	x4	All modes	1.35
32	1866	LRDIMM	4	x4	All modes	1.5
32	1600	LRDIMM	4	x4	All modes	1.35
32	1333	RDIMM	4	x4	All modes	1.35

## Memory configurations

The M620 server supports flexible memory configurations ranging from capacities of 4GB to 768GB (using 32GB DIMMs) and up to 12 DIMMs per processor (up to 24 DIMMs in a dual-processor configuration). Each processor has four memory channels, with each channel supporting up to three DIMMs.

### Memory capacity options

The M620 is available in the following memory capacity options:

- 24-DIMM capacity: uses a 57 mm heatsink and is recommended for use with processors of 95W or less
- 20-DIMM capacity: uses a 77 mm heatsink for cooling efficiency and is recommended for use with 115W and 130W processors
- 16-DIMM capacity: uses a 97 mm heatsink to support the higher ambient temperatures of Dell Fresh Air configurations

### Flexible memory configuration

The M620 supports a flexible memory configuration according to the following basic rules:

- Speed: If DIMMs of different speeds are mixed, all channels across all processors operate at the slowest DIMM's common frequency.
- DIMM type: Only one type of DIMM is allowed per system: UDIMM, RDIMM or LRDIMM. These types cannot be mixed.

The following additional memory population guidelines apply to the M620:

- Up to two quad-rank (QR) DIMMs and up to three dual-rank (DR) or single-rank (SR) DIMMs may be populated per channel. Although an LRDIMM is physically a QR DIMM, logic on the LRDIMM can make it appear as a DR DIMM to the system, allowing up to three LDRIMMs per channel.



- DIMMs must be installed in each channel, starting with the DIMM farthest from the processor.
- DIMMs should be installed with largest rank count to smallest. For example, if DR DIMMS are mixed with SR DIMMS, DR DIMMS should be placed in the lowest DIMM slots, followed by the SR DIMMS.

For more information on memory configuration and population, see the *Dell PowerEdge M620 Systems Owner's Manual* on [Dell.com/Support/Manuals](http://Dell.com/Support/Manuals).

## Memory speed

The M620 supports memory speeds of 1866MT/s, 1600MT/s, 1333MT/s, 1066MT/s and 800MT/s depending on the DIMM types installed and the configuration. All memory on all processors and channels run at the same speed and voltage. By default, the system runs at the highest speed for the channel with the lowest DIMM voltage and speed. The operating speed of the memory is also determined by the maximum speed supported by the processor, the speed settings in the BIOS and the operating voltage of the system.

Table 8 lists the memory configuration and performance details for the M620, based on the population of the number and type of DIMMs per memory channel.

**Table 8. Memory speed capabilities**

DIMM type	DIMM 0	DIMM 1	DIMM 2	Number of DIMMs	Speed (MT/s)				
					800*	1066*	1333	1600	1866
UDIMM	SR			1	•	•	•	•	
	DR			1	•	•	•	•	
	SR	SR		2	•	•	•	•	
	SR	DR		2	•	•	•	•	
	DR	DR		2	•	•	•	•	
RDIMM	SR			1	•	•	•	•	•
	DR			1	•	•	•	•	•
	QR			1	•	•	•		
	SR	SR		2	•	•	•	•	
	SR	DR		2	•	•	•	•	
	DR	DR		2	•	•	•	•	
	QR	SR		2	•	•			
	QR	DR		2	•	•			
	QR	QR		2	•	•			
	SR	SR	SR	3	•	•	•		
	SR	SR	DR	3	•	•	•		
	SR	DR	DR	3	•	•	•		
	DR	DR	DR	3	•	•	•		



DIMM type	DIMM 0	DIMM 1	DIMM 2	Number of DIMMs	Speed (MT/s)				
					800*	1066*	1333	1600	1866
LRDIMM	QR			1		•	•	•	•
	QR	QR		2		•	•	•	
	QR	QR	QR	3		•	•		

\*Although the M620 supports DIMM speeds of 800MT/s and 1066MT/s, you can only purchase this system with DIMM speeds of 1333MT/s, 1600MT/s and 1866MT/s on [Dell.com/PowerEdge](http://Dell.com/PowerEdge).

## Memory RAS features

Reliability, availability and serviceability features help keep the system online and operational without significant impact to performance, and can decrease data loss and crashing due to errors. RAS aids in rapid, accurate diagnosis of faults which require service. Table 9 describes the memory RAS features supported on the M620.

**Table 9. Memory RAS features**

Feature	Description
<b>Dense configuration optimized profile</b>	Increased memory reliability can be a result from this selectable platform profile that adjusts parameters to reduce faults regarding refresh rates, speed, temperature and voltage.
<b>Memory demand and patrol scrubbing</b>	Demand scrubbing is the ability to write corrected data back to the memory once a correctable error is detected on a read transaction. Patrol scrubbing proactively searches the system memory, repairing correctable errors.
<b>Recovery from single DRAM device failure (SDDC)</b>	Recovery from Single DRAM Device Failure (SDDC) provides error checking and correction that protects against any single memory chip failure as well as multi-bit errors from any portion of a single memory chip.
<b>Failed DIMM isolation</b>	This feature provides the ability to identify a specific failing DIMM channel pair, thereby enabling the user to replace only the failed DIMM pair.
<b>Memory mirroring: intra-socket</b>	Memory mirroring is a method of keeping a duplicate (secondary or mirrored) copy of the contents of memory as a redundant backup for use if the primary memory fails. The mirrored copy of the memory is stored in memory of the same processor socket.
<b>Memory address parity protection</b>	This feature provides the ability to detect transient errors on the address lines of the DDR channel.
<b>Memory sparing (rank)</b>	Memory sparing allocates one rank per channel as a spare. If excessive correctable errors occur in a rank or channel, they are moved to the spare area while the operating system is running to prevent the errors from causing an uncorrectable failure.
<b>Memory thermal throttling</b>	This feature helps to optimize power/performance and can also be used to prevent DIMMs from overheating.

For information on memory mirroring and sparing configurations, see the *Dell PowerEdge M620 Systems Owner's Manual* on [Dell.com/Support/Manuals](http://Dell.com/Support/Manuals). Memory RAID is not supported.



## 6 Storage

The Dell PowerEdge M620 provides comprehensive internal storage options, including several drive types and storage controllers to choose from. The M620 supports up to 1.2TB of internal storage.

Express Flash PCIe SSDs are a new option that can provide vastly accelerated performance over previous technologies. Dell Express Flash drives use PCIe lanes to connect directly to the processor and chipset and are easily accessible by hot-plug drive bay.

### Internal storage

The M620 is available in three different hard-drive backplane options. Table 10 lists the options for backplanes, hard-drive controllers and drive types for the M620.

**Table 10. Hard-drive backplane options**

Backplane	Controller	Drive types
SATA	Motherboard-embedded SATA	SATA SSD/HDD
SAS	PERC H310, H710, H710P	SAS SSD/HDD, SATA SSD/HDD
PCIe SSD	N/A	Express Flash PCIe SSD

### Supported hard drives

Table 11 lists the internal hard drives supported by the M620. For the latest information on supported hard drives, visit [Dell.com/PowerEdge](http://Dell.com/PowerEdge).

**Table 11. Supported hard drives**

Form factor	Type	Speed (rpm)	Capacities
2.5"	SATA (3GB)	7.2K	250GB, 500GB, 1TB
	Nearline SAS (6GB)	7.2K	500GB, 1TB, 1TB (SED)
	SAS (6GB)	10K	300GB, 600GB, 900GB, 900GB (SED)
	SAS (6GB)	15K	146GB, 300GB, 300GB (SED)
	SAS SSD (SLC, 6GB)	N/A	200GB, 400GB
	SATA SSD (eMLC, 3GB)	N/A	100GB, 200GB 400GB 800GB
	Express Flash PCIe SSD (SLC)	N/A	175GB, 350GB

### Express Flash drives

Express Flash drives use PCIe and SSD technologies to provide performance, scalability and optimal serviceability. Accelerated performance with high IOPs is made possible without requiring processor



resources or capturing DRAM. Also, Express Flash drives use a standardized, 2.5-inch hot-plug form factor, which allows a common management process for all drives.

The PowerEdge M620 has an option to support up to two Express Flash PCIe SSD drives with the PCIe SSD backplane configuration. This backplane configuration may be selected at purchase, but may not be upgraded later.

## Storage controllers

Dell provides highly capable RAID options for you to ensure that your data remains safe. Dell's RAID controller options offer impressive performance improvements.

### Supported RAID controllers

The newest line of PowerEdge RAID Controllers (PERCs) offers high I/O performance for a variety of uses, including database applications and streaming digital media environments. The internal RAID controllers have a dedicated connection to the system board.

#### PERC H710P

The PERC H710P is an eight-port, internal, 6Gbps PCIe RAID controller (mini form factor) with 1GB DDR3 non-volatile (NV) cache.

#### PERC H710

The PERC H710 is an eight-port, internal, 6Gbps PCIe RAID controller (mini form factor) with 512MB DDR3 NV cache.

#### PERC H310

The PERC H310 is an eight-port, internal, 6Gbps PCIe RAID controller (mini form factor) that is a low-cost, entry-level RAID solution.

#### PERC S110

The PERC S110 is a 3Gbps SATA software RAID controller that is a low-cost, entry-level RAID solution.

For more information about the latest PERC offerings, see [Dell.com/PERC](http://Dell.com/PERC).

### RAID controller feature support

Table 12 lists the features supported by the RAID controller options on the M620.

**Table 12. RAID controller feature support**

Feature	PERC option			
	S110	H310	H710	H710P
Software RAID stack	✓			
iMR firmware stack		✓		
MR firmware stack			✓	✓
SSD support	✓	✓	✓	✓
SATA backplane	✓			
SAS backplane		✓	✓	✓
SATA hard drives	✓	✓ <sup>1</sup>	✓ <sup>1</sup>	✓ <sup>1</sup>



Feature	PERC option			
	S110	H310	H710	H710P
SAS hard drives		✓	✓	✓
Un-configured hard drive support (non-RAID)	✓	✓		
RAID 0	✓	✓	✓	✓
RAID 1	✓	✓	✓	✓
DDR3 cache (512MB)			✓	
DDR3 cache (512MB)				✓
Non-volatile cache option			✓	✓
Microsoft Windows® support	✓	✓	✓	✓
Linux® support		✓	✓	✓
Virtualization support		✓	✓	✓
Mini form factor		✓	✓	✓
Embedded on motherboard	✓	N/A	N/A	N/A
PCIe 2.0		✓	✓	✓
Local support for self-encrypting drive (SED)		X		✓
UEFI browser	✓	✓	✓	✓
HII	✓	✓	✓	✓

<sup>1</sup>Supports SATA hard drives through the SAS backplane.



## 7 Networking and mezzanine cards

The Dell PowerEdge M620 offers balanced, scalable I/O capabilities, including integrated PCIe 3.0 capable mezzanine card slots. Dell Select Network Adapters, Dell's network daughtercards, let you choose the right network fabric without using up a valuable mezzanine card slot. Pick the speed, technology, vendor and other options such as switch independent partitioning, which let you share and manage bandwidth on 10 Gigabit Ethernet (10GbE) connections.

Installation of mezzanine cards requires an M1000e I/O module (IOM) of the same fabric technology to be installed in the corresponding fabric slot of the mezzanine to support data flow through that fabric or slot.

### Select Network Adapters

The Select Network Adapter family is purpose-built and includes flexible LAN on motherboard (LOM) card options for Dell PowerEdge 12<sup>th</sup>-generation servers. The Select Network Adapter form factor delivers the value of LOM integration with the system, including BIOS integration and shared port for manageability while providing the flexibility of a modular card.

The PowerEdge M620 supports one custom network daughtercard (NDC), as part of Select Network Adapters family, to house the complete LOM subsystem. There are two form factors of Select Network Adapters — one for blade servers and one for rack servers. The blade network daughtercard options supported on the M620 provide dual-port 10GbE interfaces.

**Figure 5. Blade network daughtercard (NDC)**

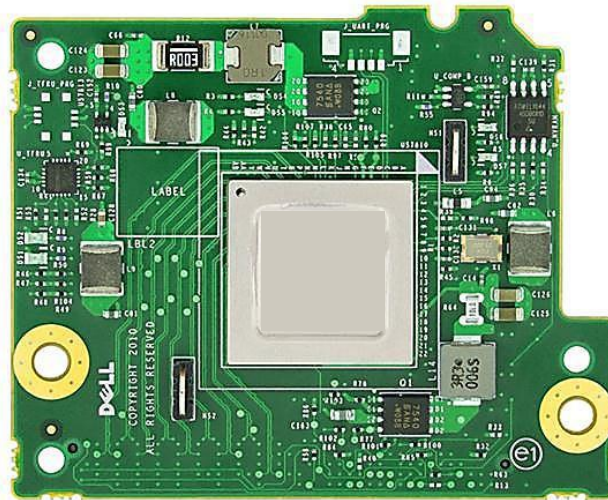




Table 13 lists the available Select Network Adapter options and their supported features for the M620.

**Table 13. Supported Select Network Adapter options and features**

Features	Broadcom 57810S-k	Broadcom 57840	Intel X520-k	QLogic QMD8262-k
<b>Ports x link speed</b>	2x10Gb	4x10Gb	2x10Gb	2x10Gb
<b>Supported speed</b>	1Gb and 10Gb	1Gb and 10Gb	1Gb and 10Gb	10Gb only
<b>SR-IOV</b>	Supported	Supported	Supported	Not supported
<b>ISCSI HBA</b>	Supported <sup>1</sup>	Supported	Not supported	Supported
<b>FCoE</b>	Supported <sup>2</sup>	Supported	Supported	Supported
<b>Switch independent partitioning</b>	Supported <sup>3</sup>	Supported <sup>4</sup>	Not supported	Supported
<b>DCB</b>	Supported	Supported	Supported	Supported
<b>DCB with iSCSI TLV</b>	Supported <sup>5</sup>	Supported	Supported <sup>5</sup>	Supported

1. Citrix XenServer 6.0 and Linux KVM only. 63 VFs per port
2. No. of queues will vary depending upon hypervisor memory limitations
3. Four partitions per 10Gb port
4. Two partitions per 10Gb port.

## System management integration

With M620, the job of deploying, updating, monitoring and maintaining the Select Network Adapters is fast and easy. System management integration features include the following:

- Pre-boot: Use the Dell Lifecycle Controller graphical user interface (GUI) to set configuration such as bandwidth allocation or firmware revision level.
- Post-boot: Agent-free out-of-band or high-speed in-band connection over LOM through the Operating System/BMC pass-through feature for sensory information.
- Automation of firmware and driver version deployment upon component replacement.
- Automatic monitoring of NIC status and notification on SNMP traps.
- Local or remote re-configuration of any NIC, physical or virtual.
- PXE boot enabled on all LOM and NDCs for ease of use.
- Boot from SAN (iSCSI, FCoE) configuration for networking devices through the Lifecycle Controller GUI.



## Mezzanine cards

The M620 provides two PCIe 3.0 mezzanine connectors for add-in cards. The M620 has been designed to be PCIe 3.0 compliant in order to take full advantage of the processor capabilities.

Table 14 lists the supported mezzanine cards for the M620.

**Table 14. Supported mezzanine cards**

Type	Adapter
<b>1Gb/10Gb NICs</b>	Broadcom 5719 quad-port 1Gb
	Intel I350 quad-port 1Gb
	Broadcom 57810S-k dual port 10Gb
	Intel X520-x/k dual port 10Gb
	Qlogic QME8262-k dual port 10Gb
	Brocade BR1741M-k dual port 10Gb
	Mellanox ConnectX-3 dual-port 10GbE KR blade
<b>Fibre channel</b>	QLogic QME2572 dual port 8Gb
	Emulex LPe1205-M dual port 8GB
	QLogic QME2662 dual port 16Gb
	Emulex LPm16002B-D dual port 16Gb
<b>InfiniBand</b>	Mellanox ConnectX-3 dual port QDR 40Gb
	Mellanox ConnectX-3 dual port FDR 56Gb
	Mellanox ConnectX-3 dual port FDR10 40Gb

For the latest information on supported mezzanine cards for the M620, visit [Dell.com/PowerEdge](https://www.dell.com/poweredge).



## 8 Power, thermal and acoustics

Lower overall system-level power draw is a result of Dell's breakthrough system design. The PowerEdge M620 blade server and M1000e chassis enclosure maximize performance per watt through a combination of power and cooling, energy efficient technologies, and tools. Additionally, the M620 has an extensive collection of sensors that automatically track thermal activity, which helps regulate temperature thereby reducing server noise and power consumption.

### Power consumption and energy efficiency

With the rise in the cost of energy coupled with increasing data center density, Dell provides tools and technologies to help you realize greater performance with less energy cost and waste. More efficient data center usage can reduce costs by slowing the need for additional data center space. Table 15 lists the tools and technologies Dell offers to help you achieve your data center goals by lowering power consumption and increasing energy efficiency.

**Table 15. Power tools and technologies**

Feature	Description
<b>Power supply units (PSU) portfolio</b>	Dell's PSU portfolio includes intelligent features such as dynamically optimizing efficiency while maintaining availability and redundancy.
<b>Tools for right-sizing</b>	<b>Energy Smart Solution Advisor (ESSA)</b> is a tool that helps you determine the most efficient configuration possible. With Dell's ESSA, you can calculate the power consumption of your hardware, power infrastructure and storage. ESSA can help you determine exactly how much power your server will use at a given workload, and the PSU Advisor can help you choose the best, most efficient PSU for your workload. Learn more at <a href="http://Dell.com/ESSA">Dell.com/ESSA</a> .
<b>Industry compliance</b>	Dell's servers are compliant with relevant industry certifications and guidelines, including 80 PLUS and ENERGY STAR.
<b>Power monitoring accuracy</b>	PSU power monitoring improvements include: <ul style="list-style-type: none"><li>• Dell's power monitoring accuracy is currently 1%, whereas the industry standard is 5%</li><li>• More accurate reporting of power</li><li>• Better performance under a power cap</li></ul>
<b>Power capping</b>	Use Dell's systems management to set the power cap limit for your systems to limit the output of a PSU and reduce system power consumption. Dell is the first hardware vendor to leverage Intel Node Manager for circuit-breaker fast capping.
<b>Systems management</b>	<b>iDRAC7 Enterprise</b> provides server-level management that monitors, reports and controls power consumption at the processor, memory and system level. <b>Dell OpenManage Power Center</b> delivers group power management at the rack, row and data center level for servers, power distribution units and uninterruptible power supplies.



Feature	Description
	<b>Intel Node Manager</b> is an embedded technology that provides individual server-level power reporting and power limiting functionality. Dell offers a complete power management solution comprised of Intel Node Manager accessed through Dell iDRAC7 Enterprise and OpenManage Power Center that allows policy-based management of power and thermals at the individual server, rack and data center level.
<b>Active power management</b>	<p><b>Hot spare</b> reduces power consumption of redundant power supplies.</p> <p><b>Thermal control of fan speed</b> optimizes the thermal settings for your environment to reduce fan consumption and lower system power consumption.</p> <p><b>Idle power</b> enables Dell servers to run as efficiently when idle as when at full workload.</p>
<b>Dell Fresh Air cooling</b>	With the thermal design and reliability of Dell products, certain configurations have the capability to operate at excursion-based temperatures beyond the industry standard of 35°C (95°F) up to 45°C (113°F) for excursionary periods of time and up to a 26°C dew point at 90% relative humidity; without impacting your availability model. Find additional information at <a href="http://Dell.com/FreshAir">Dell.com/FreshAir</a> .
<b>Rack infrastructure</b>	<p>Dell offers some of the industry's highest-efficiency power infrastructure solutions, including:</p> <ul style="list-style-type: none"> <li>• <a href="#">Power distribution units (PDUs)</a></li> <li>• <a href="#">Uninterruptible power supplies (UPSs)</a></li> <li>• <a href="#">Energy Smart containment rack enclosures</a></li> </ul> <p>Find additional information at <a href="http://Dell.com/RackInfrastructure">Dell.com/RackInfrastructure</a>.</p>

Find additional information at [Dell.com/PowerAndCooling](http://Dell.com/PowerAndCooling) and [Dell.com/PowerCenter](http://Dell.com/PowerCenter).

## Power supply units

The M1000e chassis enclosure provides power and cooling for the M620 blade server. For information on the M1000e power supply units, see the *PowerEdge M1000e Technical Guide* on [Dell.com/PowerEdge](http://Dell.com/PowerEdge).

## Thermal and acoustics

Optimized thermal management keeps fan speeds in the PowerEdge M620 as low as possible, contributing to quiet operation and ensuring proper component cooling.

### Thermal design

The thermal design of the PowerEdge M620 reflects the following:

- **Comprehensive thermal management:** The PowerEdge M620 dynamically controls system cooling fan speed, based on responses from critical sensors that monitor the temperature of several components, including:
  - Processors
  - DIMMs
  - System inlet ambient



- Mezzanine card
- Network daughtercard (NDC)

Thermal control also detects and responds to hardware configuration. Thermal management adjusts cooling according to what the system really needs, draws lower fan power and generates lower acoustical noise levels than those without such controls.

- **Environmental specifications:** The optimized thermal management makes the PowerEdge M620 reliable under a wide range of operating environments as shown in Table 24. When operating above 30°C ambient, performance impacts may be seen. For more information see the *Dell PowerEdge M620 Systems Owner's Manual* on [Dell.com/Support/Manuals](http://Dell.com/Support/Manuals).

## Acoustical performance

The acoustical performance of the PowerEdge M620 is reflected in Table 16. The addition of some components can cause an increase in fan speed and acoustical output. Contributors to acoustical output can include:

- The system thermal profile selected in BIOS (for example, power- or performance -optimized DAPC)
- Express Flash PCIe SSDs
- NDC
- Number of installed processors
- Population of modular, non-homogenous modular deployment
- Impedance of blanks

**Table 16. M620 acoustical performance**

Configuration (23 ± 2°C ambient)	CPUs	Hard drives	DIMMs	HDD controller	NDC	PCI cards	Operating mode	L <sub>WA</sub> -UL <sup>1</sup> (bels)	L <sub>pA</sub> <sup>2</sup> (dBA)
<b>Minimum</b>	1 x 80W (4 core)	1 x SATA (7.2K)	4 x 4GB	Onboard SATA	None	Any mezz. card	Standby <sup>3</sup>	6.8	54
							Idle <sup>4</sup>	7.4	59
<b>Typical</b>	2 x 95W (8 core)	2 x SAS (10K)	16 x 8GB	PERC H310 (mini)	1Gb	Any mezz. card	Standby <sup>3</sup>	6.7	53
							Idle <sup>4</sup>	7.8	62

<sup>1</sup>L<sub>WA</sub>-UL is the upper limit sound power levels (L<sub>WA</sub>) calculated per section 4.4.1 of ISO 9296 (1988) and measured in accordance to ISO 7779 (2010).

<sup>2</sup>L<sub>pA</sub> is the average A-weighted sound pressure level from the four bystander positions calculated per section 4.3 of ISO 9296 (1988) and measured in accordance with ISO 7779 (2010). The system is placed in a half rack enclosure (base of system is 25 cm above reflective floor).

<sup>3</sup>Standby: AC power is connected to power supply units but the system is not turned on.

<sup>4</sup>Idle: Reference ISO 7779 (2010) definition 3.1.7; system is running in its operating system but no other specific activity.



## 9 Operating systems and virtualization

The Dell PowerEdge M620 supports a wide range of industry-standard operating systems and virtualization software.

### Supported operating systems

Table 17 lists the operating systems supported on the M620. For the latest information on supported operating systems, see [Dell.com/OSsupport](http://Dell.com/OSsupport).

**Table 17. Primary operating system support**

Operating System	Platform	Edition
<b>Red Hat Enterprise Linux 5.8<sup>1</sup></b>	x32	N/A
	x64	
<b>Red Hat Enterprise Linux 6.3<sup>2</sup></b>	x64	N/A
<b>Red Hat Enterprise Linux for HPC Compute Node</b>	x64	N/A
<b>SUSE Linux Enterprise Server 11 SP3</b>	x64	N/A
<b>SUSE Linux Enterprise Server 10 SP4</b>	x64	N/A
<b>Microsoft Windows Server 2012</b>	X64	Standard Data center
<b>Microsoft Windows Server 2012 R2</b>	x64 (with Microsoft Hyper-V role enabled)	Standard Data center
	x86	
<b>Microsoft Windows Server 2008 SP2</b>	x64 (with Microsoft Hyper-V role enabled)	Standard Enterprise Data center
	x64 (with Microsoft Hyper-V role enabled)	
<b>Microsoft Windows Server 2008 R2 with SP1</b>	x64 (with Microsoft Hyper-V role enabled)	Standard Enterprise Data center HPC
	x64 (with Microsoft Hyper-V role enabled)	

<sup>1</sup>RHEL 5.7 is the minimum supported version. Current drop in box option is RHEL 5.8.

<sup>2</sup>RHEL 6.1 is the minimum supported version. Current factory install is RHEL 6.3.



Support of the operating systems listed in Table 18 is limited to a virtual environment as a guest operating system. Please contact the software vendor for additional support or questions about running the operating system in a virtualized environment.

**Table 18. Virtual guest operating system support**

Operating System	Platform	Edition
<b>Microsoft Windows 2003<sup>1</sup></b>	x86	Web
	x86	Standard Enterprise
<b>Microsoft Windows 2003 R2 with SP2<sup>1</sup></b>	x64	Standard Enterprise Data center

<sup>1</sup>Not validated for use with AMD GPUs

## Supported virtualization

One of the key features for virtualization on the M620 is the support for a failsafe hypervisor. By running the hypervisor on an optional SD card and installing a backup copy on the other mirrored SD card, you can protect against hardware failure and maximize virtualization uptime. Table 19 highlights the virtualization support for the M620.

**Table 19. Virtualization support**

Operating systems	Install version	Factory options	Internal dual SD module install support	
<b>VMware</b>	vSphere v5.0	ESXi	DIB	Yes
	vSphere v5.0 U1	ESXi	FI/DIB	Yes
	vSphere v5.1	ESXi	FI/DIB	Yes
<b>Citrix</b>	XenServer v6.1	N/A	DIB	No
<b>Red Hat<sup>1</sup></b>	Enterprise Virtualization v3.2	N/A	DIB	No

FI = factory install; DIB = drop-in-box

<sup>1</sup>No OpenManage support; drop-in-box license registration card only



## 10 Dell OpenManage systems management

Whether your IT environment consists of a few servers or a few thousand servers, Dell OpenManage systems management solutions provide comprehensive management for evolving IT environments. OpenManage is based on open standards and provides agent-based and agent-free server lifecycle management functionality for Dell PowerEdge servers. OpenManage solutions help you automate and streamline essential hardware management tasks.

The advanced management capabilities of Dell OpenManage also integrate into offerings from other popular systems management solutions that you may already use, making Dell platforms easy to manage and deploy in any IT environment. This ensures your IT services are available when your business needs them. If you have already standardized on offerings from industry leaders, such as BMC Software, Microsoft, Symantec™, VMware, or other vendors, you can leverage OpenManage integration and connections developed to use with your existing systems management framework to efficiently manage Dell servers, storage, business-client PCs and network devices.

Start with a firm foundation for efficient hardware management using OpenManage tools, utilities and management consoles. OpenManage systems management solutions consist of a combination of embedded management features and software products that help you automate and simplify the entire server lifecycle: deploy, update, monitor and maintain. OpenManage solutions are innovatively designed for simplicity and ease of use to help you reduce complexity, save time, achieve efficiency, control costs and empower productivity.

### Systems management solutions

Dell systems management solutions include a wide variety of tools, products and services that enable you to leverage an existing systems management framework. As shown in Figure 6, Dell systems management solutions are centered on OpenManage server management, featuring iDRAC with Lifecycle Controller.

**Figure 6. Dell systems management solutions**





## OpenManage systems management

The Dell OpenManage systems management portfolio includes powerful hardware and software management tools and consoles. OpenManage simplifies the lifecycle of deploying, updating, monitoring and maintaining your Dell PowerEdge servers.

### iDRAC7 with Lifecycle Controller

The Integrated Dell Remote Access Controller 7 (iDRAC7) with Lifecycle Controller is the heart of the second generation of Dell PowerEdge server embedded management functionality. In addition to enabling agent-free management, iDRAC7 with Lifecycle Controller provides remote access to the system — whether or not there is a functioning operating system running on the server. These embedded features improve all aspects of a typical server lifecycle. Table 20 describes the functions and benefits of iDRAC7 with Lifecycle Controller.

**Table 20. iDRAC7 with Lifecycle Controller functions and benefits**

Feature	Function	Benefit
<b>Out of band (OOB)</b>	iDRAC7 offers real-time OOB discovery, inventory, deployment monitoring, alerting and updates for servers and internal storage	Manage servers independent of the OS type or status — even if an OS is not installed or operational
<b>Single code base</b>	All server types have the same embedded management hardware and firmware	Simplified and consistent maintenance across server platforms
<b>Dedicated GbE port (PowerEdge rack and tower systems)</b>	Gigabit Ethernet (GbE) replaces 10/100 on predecessor iDRAC6	Fast throughput for better performance; compatibility with setup for switches
<b>Email alerts</b>	Simplified, more informative and expanded coverage than previous versions of iDRAC	More detail allows IT administrators to be more efficient in diagnosing and remediating an issue; alerts include a direct, embedded URL in the email notification to further speed resolution
<b>vFlash media</b>	Enabled with iDRAC7 Enterprise	Allows for use of a non-Dell SD card
<b>Enhanced power management</b>	Integration with Intel Node Manager provides data center level power monitoring and capping (requires iDRAC7 Enterprise)	Fine tune data center power usage and report on historical power usage by rack, row or room using OpenManage Power Center



Feature	Function	Benefit
<b>Electronic licensing</b>	To obtain a software license key for iDRAC7 Express for Blades or iDRAC7 Enterprise after server purchase, submit a request to purchase a software license key through the Dell Licensing Portal or with a Dell sales representative	If iDRAC7 Express for Blades or iDRAC7 Enterprise is ordered during initial point of sale, license key is installed. If Basic Management is ordered during initial point of sale, customer must request a license key through the Dell Licensing Portal. For most server models, embedded server management and electronic licensing enables feature enhancements that do not require installation of additional hardware or system downtime.

## iDRAC7 feature comparison

iDRAC7 Enterprise is available for the PowerEdge M620, and Dell also offers an option of iDRAC7 Express for Blades. A detailed feature comparison for iDRAC7 Enterprise and iDRAC7 Express for Blades is shown in Table 21.

**Table 21. Feature comparison for iDRAC7 Enterprise and iDRAC7 Express for Blades**

Feature (function)	iDRAC7 Enterprise	iDRAC7 Express for Blades
Local configuration with Lifecycle Controller GUI	•	•
IPMI 2.0	•	•
Embedded diagnostics	•	•
Local OS install	•	•
Local updates	•	•
Driver pack	•	•
Encryption	•	•
Dedicated NIC 1Gbps (100MB in iDRAC6)	• <sup>1</sup>	• <sup>1</sup>
IPv6	•	•
Auto-discovery	•	•
Auto-recovery	•	•
Web GUI	•	•
Remote CLI	•	•
Local/SSH CLI	•	•
Serial redirection	•	•
Remote configuration	•	•
Remote update	•	•



Feature (function)	iDRAC7 Enterprise	iDRAC7 Express for Blades
Email alerts	•	•
SNMP alerts	•	•
Comprehensive monitoring	•	•
Virtual Console	•	• <sup>2</sup>
Virtual Media	•	•
Crash screen capture <sup>3</sup>	•	•
Power control	•	•
Power monitoring	•	•
Virtual console chat	•	
Support for customer-supplied SD cards for vFlash	•	
Virtual flash partitions	•	
Virtual folders	•	
Remote file share	•	
Crash video playback	•	
Boot record/playback	•	
Part replacement	•	
Backup and restore configurations	•	
Power capping	•	
Enterprise group power management	•	
Directory services (AD, LDAP)	•	
PK authentication	•	
Two-factor authentication <sup>4</sup>	•	

<sup>1</sup>Blade-to-chassis internal connection is 100MB; <sup>2</sup>Single user; <sup>3</sup>Requires OMSA agent on target server; <sup>4</sup>Uses Microsoft ActiveX<sup>®</sup> on Internet Explorer<sup>®</sup> only

## Agent-based systems management

Most systems management solutions require pieces of software, called agents, to be installed on each node in order to be managed within the IT environment. Additionally, the same agent is often used as a local interface into the hardware health and may be accessed remotely as a management interface, typically referred to as a one-to-one interface. For customers that continue to use agent-based solutions, Dell provides OpenManage Server Administrator.

### OpenManage Server Administrator

The Dell OpenManage Server Administrator (OMSA) agent gives you a comprehensive, one-to-one systems management solution for both local and remote servers and their storage. OMSA can help simplify single-server monitoring with a secure command-line interface (CLI) or web-based



management GUI. It can also be used to view system configuration, inventory, health and performance.

### Agent-free management

Because Dell PowerEdge servers have embedded server lifecycle management, in many cases, there is no need to install an OpenManage systems management software agent into the operating system of a Dell PowerEdge server. This greatly simplifies and streamlines the management footprint.

### Chassis Management Controller console for blade systems

The Dell CMC is a systems management hardware and software solution for managing multiple Dell blade chassis. The CMC is a hot-pluggable module inserted in the back of a Dell blade chassis. It provides a secure interface that enables an administrator to inventory, perform configuration and monitoring tasks, remote power on/off blades, and enable alerts for events on servers and components in the blade chassis.

The CMC uses iDRAC7 with Lifecycle Controller to perform management functions, such as opening a remote console session from the CMC interface.

## Dell consoles

The central console in a systems management solution is often referred to as the one-to-many console. The central console provides a rapid view and insight into the overall health of all systems in the IT environment. The Dell systems management portfolio includes several powerful consoles, depending upon your needs, including the following:

- **Dell OpenManage Essentials** — OpenManage Essentials (OME) is a recently released systems management console that provides a comprehensive view of Dell systems, devices and components in an enterprise network. It is used to monitor Dell PowerEdge servers, EqualLogic™ and PowerVault™ storage and Dell Networking switches; to update and configure Dell servers; and to create asset reports. OpenManage Essentials also communicates health status alerts for Dell servers, storage and network devices to the Dell KACE™ K1000 service desk. OpenManage Essentials is available as a no-charge software download from [Dell.com/Support](http://Dell.com/Support).

## OpenManage systems management tools and utilities

Dell OpenManage systems management tools and utilities consist of the following:

- **Dell Repository Manager** — The Dell Repository Manager (RM) is a standalone GUI-based productivity tool that helps simplify the process of managing downloads and baseline BIOS, firmware, and driver updates. Repository Manager can create deployment disks as well as create and manage customized repositories.
- **Dell OpenManage Server Update Utility** — The Dell Server Update Utility (SUU) is a DVD-based application for identifying and applying BIOS and firmware updates to your Dell PowerEdge servers.
- **Dell OpenManage Systems Build and Update Utility** — The Dell System Build and Update Utility (SBUU) provides one-to-one and one-to-many deployment and single-server update capabilities in the pre-operating system environment.
- **Dell Update Packages** — The Dell Update Packages (DUP) is a self-contained executable in a standard package format that updates a software element on a Dell server such as the BIOS, a driver, firmware and other software updates.
- **Dell OpenManage Deployment Toolkit** — The Dell OpenManage Deployment Toolkit (DTK) is a CLI-based tool that includes a set of utilities for configuring and deploying Dell PowerEdge



systems, and can be used to build scripted, unattended OS installations to deploy large numbers of servers in a reliable fashion.

- **RACADM** — The RACADM command-line utility provides a scriptable interface that allows you to locally or remotely configure iDRAC7.
- **IPMITool** — IPMITool includes scriptable console application programs used to control and manage remote systems using the IPMI version 1.5 and later protocol.

## Integration with third-party consoles

Dell OpenManage easily integrates with several leading third-party consoles, including:

- **Dell Server Management Pack Suite for Microsoft System Center Operations Manager (SCOM)** — This suite of server management packs enables several functions through System Center Operations Manager, including in-band discovery and monitoring of racks and towers, out-of-band discovery and monitoring through iDRAC with Lifecycle Controller, as well as performance and advanced monitoring.
- **Dell Lifecycle Controller Integration (DLCI) for Microsoft System Center Configuration Manager (SCCM)** — This pack contains Dell Lifecycle Controller Integration (DLCI), which integrates OpenManage functions in SCCM to manage the Dell PowerEdge servers, including auto-discovery, operating system deployment and configuration of hardware elements, (RAID, NIC, BIOS, iDRAC), OS and hypervisor agnostic updates, firmware management and system viewer utilities.
- **Dell Server PRO Management Pack for Microsoft System Center Virtual Machine Manager (SCVMM)** — This pack manages Dell physical servers and hosts of virtual machines (VMs) by using Microsoft System Center Operations Manager/System Center Essentials (SCOM/SCE) and System Center Virtual Machine Manager (SCVMM). It provides guidance for remedial actions based on alerts to best manage virtual machines and handle the impacts appropriately.
- **OpenManage Integration for VMware vCenter** — This plug-in allows IT administrators to monitor, provision and manage the physical PowerEdge server hardware and firmware from a dedicated Dell menu accessed through the VMware vCenter console using the same role-based access control model as vCenter, combining physical server management.
- **BMC Software** — Dell and BMC Software work together to simplify IT by ensuring tight integration between Dell server, storage and network management functionality and the BMC Software process and data center automation products.

## OpenManage connections with third-party consoles

Dell OpenManage provides connections with many third-party consoles, including:

- **Dell OpenManage Connection for Computer Associates Network and Systems Management** — This connection allows you to monitor PowerEdge servers and PowerVault storage arrays from within the Computer Associates Network and Systems Management (CA NSM) console.
- **Dell OpenManage Connection for HP Operations Manager** — This connection enables several functions through HP Operations Manager, including auto-grouping, SNMP trap reception, global health monitoring and a context-sensitive launch of OpenManage Server Administrator.
- **Dell OpenManage Connection for IBM Tivoli Netcool/OMNIBus** — This connection provides event monitoring capabilities to monitor Dell PowerEdge servers and Dell EqualLogic systems. It allows event monitoring, automatic event correlation and launching device consoles from the Netcool/OMNIBus console.



## Dell server management operations

Dell OpenManage systems management is centered on automating the server management lifecycle — deploy, update, monitor and maintain. To manage an infrastructure properly and efficiently, you must perform all of these functions easily and quickly. iDRAC7 with Lifecycle Controller technology provides you with these intelligent capabilities embedded within the server infrastructure. This allows you to invest more time and energy on business improvements and less on maintenance. Figure 7 illustrates the various operations that can be performed during the server's lifecycle.

**Figure 7. Systems management server lifecycle**

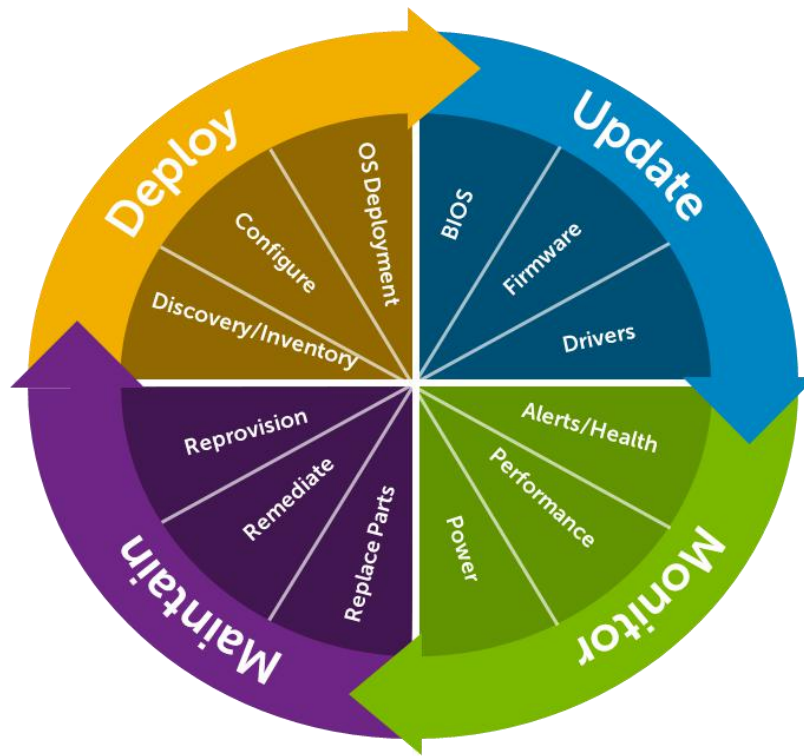


Table 22 lists the products that are available for one-to-one and one-to-many operations, and when they are used in the server's lifecycle:

**Table 22. One-to-one and one-to-many operations**

Operation	One-to-one	One-to-many	
<b>Deploy</b>	<ul style="list-style-type: none"> <li>iDRAC7 with Lifecycle Controller GUI</li> <li>DTK</li> <li>SBUU</li> </ul>	<ul style="list-style-type: none"> <li>Symantec Deployment Server</li> <li>OpenManage Integration for VMware vCenter</li> <li>KACE K1000 Appliance</li> <li>Lifecycle Controller Remote Services</li> <li>BMC BladeLogic integration with Lifecycle Controller</li> </ul>	<ul style="list-style-type: none"> <li>Dell Server Deployment Pack (DSDP) for Microsoft System Center Configuration Manager and Dell Lifecycle Controller Integration (DLCI) for Microsoft System Center Configuration Manager</li> </ul>
	<ul style="list-style-type: none"> <li>iDRAC7 with Lifecycle Controller GUI</li> <li>Repository Manager</li> <li>DUP</li> <li>SUU</li> <li>SBUU</li> <li>OpenManage Integration for VMware vCenter</li> </ul>	<ul style="list-style-type: none"> <li>Dell OpenManage Essentials</li> <li>Lifecycle Controller Remote Services</li> </ul>	<ul style="list-style-type: none"> <li>Dell Update Catalogs for Microsoft System Center Configuration Manager</li> <li>Dell Lifecycle Controller Integration (DLCI) for Microsoft System Center Configuration Manager</li> </ul>
<b>Monitor</b>	<ul style="list-style-type: none"> <li>iDRAC7 with Lifecycle Controller GUI</li> <li>OMSA</li> </ul>	<ul style="list-style-type: none"> <li>Dell OpenManage Essentials</li> <li>BMC ProactiveNet Performance Management integration with Lifecycle Controller</li> <li>Dell OpenManage Power Center</li> </ul>	<ul style="list-style-type: none"> <li>OpenManage Integration for VMware vCenter</li> <li>BMC ProactiveNet Performance Management integration with Lifecycle Controller</li> <li>Dell Server Management Pack Suite for Microsoft System Center Operations Manager (SCOM)</li> </ul>
	<ul style="list-style-type: none"> <li>IPMI</li> <li>iDRAC7 with Lifecycle Controller GUI</li> </ul>	<ul style="list-style-type: none"> <li>Lifecycle Controller Remote Services</li> </ul>	Remediate: <ul style="list-style-type: none"> <li>Dell Server PRO Management Pack for Microsoft System Center Virtual Machine Manager (SCVMM)</li> </ul> Replace parts: <ul style="list-style-type: none"> <li>Dell Lifecycle Controller Integration (DLCI) for Microsoft System Center Configuration Manager</li> </ul>

For additional detailed information on Dell's systems management portfolio, see the *Dell OpenManage Systems Management Overview Guide* on [Dell.com/Support/Manuals](http://Dell.com/Support/Manuals).

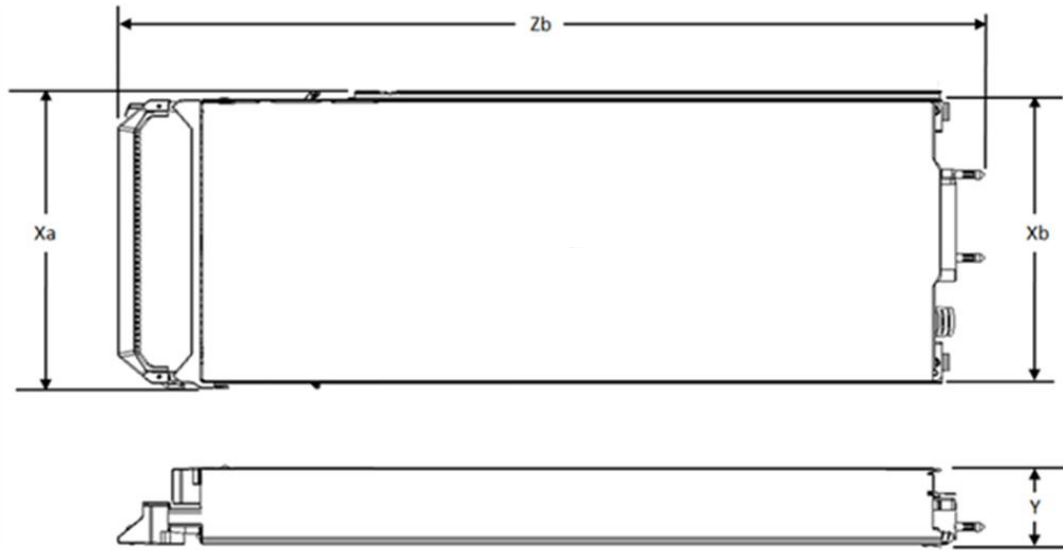


## Appendix A. Additional specifications

### Module dimensions and weight

Figure 8 details the dimensions of the M620 module.

Figure 8. Module dimensions



Xa	Xb	Y	Zb (handle closed)	Zb (handle open)
197.92 mm	192.3 mm	50.35 mm	544.32 mm	564.9 mm

The weight of a maximum-configured M620 blade server is 7.0 kg (15.4 lb).

### Video specifications

The Dell PowerEdge M620 iDRAC incorporates an integrated video subsystem. The graphics controller is the 2D Matrox<sup>®</sup> G200. The video frame buffer (16MB) is contained within the iDRAC RAM (256MB) device.

The M620 system supports the 2D graphics video modes in Table 23.

Table 23. Supported video modes

Resolution	Refresh Rate (Hz)	Color Depth (bit)
640 x 480	60, 70	8, 16, 32
800 x 600	60, 75, 85	8, 16, 32
1024 x 768	60, 75, 85	8, 16, 32
1152 x 864	60, 75, 85	8, 16, 32





Resolution	Refresh Rate (Hz)	Color Depth (bit)
<b>1280 x 1024</b> (not available for UEFI)	60, 75	8, 16, 32

## Environmental specifications

For additional information about environmental measurements for specific system configurations, see [Dell.com/environmental\\_datasheets](http://Dell.com/environmental_datasheets).

Table 24 details the environmental specifications for the M620.

**Table 24. Environmental specifications**

Dell Fresh Air: temperature, humidity, altitude de-rating	
<b>Continuous operation</b>	10°C to 35°C (50°F to 95°F) at 10% to 80% relative humidity with 26°C (78.8°F) maximum dew point (maximum wet bulb temperature). De-rate maximum allowable dry bulb temperature at 1°C per 300 m above 950 m (1°F per 547 ft above 3117 ft).
<b>Expanded operation</b>	<p>When operating in the expanded temperature range, system performance may be impacted and ambient temperature warnings may be reported on the LCD and in the System Event Log.</p> <p><b>≤ 10% of annual operating hours:</b> 5°C to 10°C and 35°C to 40°C (with no direct sunlight on the equipment) at 5% to 85% relative humidity with 26°C dew point (maximum wet bulb temperature). Outside the standard operating temperature (10°C to 35°C), the system can operate down to 5°C or up to 40°C for a maximum of 10% of its annual operating hours. For temperatures between 35°C and 40°C (95°F to 104°F), de-rate maximum allowable dry bulb temperature by 1°C per 175 m above 950 m (1°F per 319 ft above 3117 ft).</p> <p><b>≤ 1% of annual operating hours:</b> -5°C to 5°C and 40°C to 45°C (with no direct sunlight on the equipment) at 5% to 90% relative humidity with 26°C dew point (maximum wet bulb temperature). Outside the standard operating temperature (10°C to 35°C), the system can operate down to -5°C or up to 45°C for a maximum of 1% of its annual operating hours. For temperatures between 40°C and 45°C (104°F to 113°F), de-rate maximum allowable dry bulb temperature by 1°C per 125 m above 950 m (1°F per 228 ft above 3117 ft).</p> <p><b>Expanded operation restrictions:</b></p> <ul style="list-style-type: none"> <li>• Maximum 95W processor is supported.</li> <li>• Dell PERC H710 and H710P cards are not supported in dual-processor configurations.</li> <li>• When populating the blade slots in the enclosure with only PowerEdge M620 blades: <ul style="list-style-type: none"> <li>– Dual-processor blade servers with PERC H310 cards cannot be mixed with single-processor blades.</li> <li>– To support a PERC H310 card in a dual-processor configuration, the blade slots in the M1000e enclosure must be installed with M620 blades or a combination of blade blanks and M620 blades. The PowerEdge M620 blades must be installed with 97 mm wide heat sinks.</li> </ul> </li> <li>• Non Dell qualified peripheral cards and/or peripheral cards greater than 25W are not supported.</li> </ul>
Temperature	
<b>Operating</b>	See Dell Fresh Air for temperature information
<b>Storage</b>	-40°C to 65°C (-40°F to 149°F) with a maximum temperature gradation of 20°C per hour



## Relative humidity

**Operating** See Dell Fresh Air for relative humidity information

**Storage** 5% to 95% at a maximum wet bulb temperature of 33°C (91°F); atmosphere must be non-condensing at all times

## Maximum vibration

**Operating** 0.26 Grms at 5Hz to 350Hz for 15 minutes

**Storage** 1.54 Grms at 10Hz to 250Hz for 15 minutes

## Maximum shock

**Operating** One shock pulse in the positive z axis (one pulse on each side of the system) of 31G for up to 2.6 ms

**Storage** Six consecutively executed shock pulses in the positive and negative x, y and z axes (one pulse on each side of the system) of 71G for up to 2 ms

## Altitude

**Operating** -15.2 m to 3048 m (-50 ft to 10,000 ft)

**Storage** -15.2 m to 12,000 m (-50 ft to 39,370 ft)

## Airborne contaminant level

Class G1 or lower as defined by ISA-S71.04-1985

## USB peripherals

USB peripherals are supported through the front USB ports, which are USB 2.0 compliant.



## Appendix B. Standards compliance

The M620 system conforms to the industry standards in Table 25.

**Table 25. Industry standards documentation**

Standard	URL for information and specifications
<b>ACPI</b> Advance Configuration and Power Interface Specification, v2.0c	<a href="http://acpi.info">acpi.info</a>
<b>ENERGY STAR</b> ENERGY STAR 2.0 for Computer Servers	<a href="http://energystar.gov">energystar.gov</a>
<b>Ethernet</b> IEEE 802.3-2005	<a href="http://standards.ieee.org/getieee802/802.3.html">standards.ieee.org/getieee802/802.3.html</a>
<b>HDG</b> Hardware Design Guide Version 3.0 for Microsoft Windows Server	<a href="http://microsoft.com/whdc/system/platform/pcdesign/designguide/serv_erdg.msp">microsoft.com/whdc/system/platform/pcdesign/designguide/serv_erdg.msp</a>
<b>IPMI</b> Intelligent Platform Management Interface, v2.0	<a href="http://intel.com/design/servers/ipmi">intel.com/design/servers/ipmi</a>
<b>DDR3 Memory</b> DDR3 SDRAM Specification, Rev. 3A	<a href="http://jedec.org/download/search/JESD79-3C.pdf">jedec.org/download/search/JESD79-3C.pdf</a>
<b>LPC</b> Low Pin Count Interface Specification, Rev. 1.1	<a href="http://developer.intel.com/design/chipsets/industry/lpc.htm">developer.intel.com/design/chipsets/industry/lpc.htm</a>
<b>PCI Express</b> PCI Express Base Specification Rev. 2.0 and 3.0	<a href="http://pcisig.com/specifications/pciexpress">pcisig.com/specifications/pciexpress</a>
<b>PMBus</b> Power System Management Protocol Specification, v1.2	<a href="http://pmbus.info/specs.html">pmbus.info/specs.html</a>
<b>SAS</b> Serial Attached SCSI, v1.1	<a href="http://t10.org">t10.org</a>
<b>SATA</b> Serial ATA Rev. 2.6; SATA II, SATA 1.0a Extensions, Rev. 1.2	<a href="http://sata-io.org">sata-io.org</a>
<b>SMBIOS</b> System Management BIOS Reference Specification, v2.7	<a href="http://dmtf.org/standards/smbios/">dmtf.org/standards/smbios/</a>
<b>TPM</b> Trusted Platform Module Specification, v1.2	<a href="http://trustedcomputinggroup.org">trustedcomputinggroup.org</a>
<b>UEFI</b> Unified Extensible Firmware Interface Specification, v2.1	<a href="http://uefi.org/specifications">uefi.org/specifications</a>
<b>USB</b> Universal Serial Bus Specification, Rev. 2.0	<a href="http://usb.org/developers/docs">usb.org/developers/docs</a>



Standard	URL for information and specifications
<b>Windows Logo</b> Windows Logo Program System and Device Requirements, v3.10	<a href="https://microsoft.com/whdc/winlogo/hwrequirements.mspx">microsoft.com/whdc/winlogo/hwrequirements.mspx</a>

---



## Appendix C. Additional resources

Table 26 provides a list of documents and websites that provide for more information on the Dell PowerEdge M620.

**Table 26. Additional resources**

Resource	Description of contents	Location
<b>Dell PowerEdge M620 Systems Owner's Manual</b>	This manual, available in PDF format, provides the following information: <ul style="list-style-type: none"> <li>• Chassis features</li> <li>• System setup program</li> <li>• System messages</li> <li>• System codes and indicators</li> <li>• System BIOS</li> <li>• Remove and replace procedures</li> <li>• Troubleshooting</li> <li>• Diagnostics</li> <li>• Jumpers and connectors</li> </ul>	<a href="http://Dell.com/Support/Manuals">Dell.com/Support/Manuals</a>
<b>Dell PowerEdge M1000e Enclosure Owner's Manual</b>	This manual provides information on the PowerEdge M1000e chassis enclosure and its supported blade server modules.	<a href="http://Dell.com/Support/Manuals">Dell.com/Support/Manuals</a>
<b>Dell PowerEdge M1000e, M915, M910, M820, M710HD, M710, M620, M610x, M610, M520 and M420 Getting Started Guide</b>	This guide is printed and shipped with the system, and is also available in PDF format on the Dell support site. This guide provides information on the following: <ul style="list-style-type: none"> <li>• Initial setup steps</li> <li>• Key system features</li> <li>• Technical specifications</li> </ul>	<a href="http://Dell.com/Support/Manuals">Dell.com/Support/Manuals</a>
<b>System Information Label</b>	The system information label documents the system board layout and system jumper settings.	On the module
<b>Quick Resource Locator (QRL)</b>	This code on the chassis can be scanned by a phone application to access additional information and resources for the server, including videos, reference materials, service tag information and Dell contact information.	On the module
<b>Information Update</b>	This document is printed and shipped with the system, and is also available in PDF format on the Dell support site. This guide provides system update information.	<a href="http://Dell.com/Support/Manuals">Dell.com/Support/Manuals</a>
<b>Dell PowerEdge M1000e Technical Guide</b>	This guide provides detailed technical information on the M1000e chassis enclosure and its supported features.	<a href="http://Dell.com/PowerEdge">Dell.com/PowerEdge</a>



Resource	Description of contents	Location
<b>Energy Smart Solution Advisor (ESSA)</b>	The Dell online advisor console enables easier and more meaningful estimates to help you determine the most efficient configuration possible. Use ESSA to calculate the power consumption of your hardware, power infrastructure and storage.	<a href="http://Dell.com/ESSA">Dell.com/ESSA</a>
<b>Power and cooling technologies</b>	Provides details for improving energy efficiency in the data center.	<a href="http://Dell.com/PNC">Dell.com/PNC</a>
<b>Energy management</b>	Provides information on Dell's Fresh Air cooling solutions.	<a href="http://Dell.com/FreshAir">Dell.com/FreshAir</a>
<b>Operating system matrix for Dell PowerEdge systems</b>	Provides updated information on which operating systems are available on which PowerEdge systems.	<a href="http://Dell.com/OSsupport">Dell.com/OSsupport</a>
<b>Processor and chipset</b>	Provides more information about the R620 processors and chipset.	<a href="http://Intel.com">Intel.com</a>
<b>Dell PowerEdge RAID controllers</b>	Provides more information on Dell PowerEdge RAID controllers (PERC).	<a href="http://Dell.com/PERC">Dell.com/PERC</a>
<b>Power distribution unit (PDU)</b>	Provides help selecting a power distribution unit).	<a href="http://DellPDU.com">DellPDU.com</a>
<b>Uninterruptible power supply (UPS)</b>	Provides help selecting an uninterruptible power supply model.	<a href="http://DellUPS.com">DellUPS.com</a>
<b>Volatility information</b>	Contact your Dell Sales Representative.	
<b>Dell Enterprise Acoustics</b>	White paper that explores the mechanisms of, people's reaction to, language of, and Dell's work to control noise from Enterprise products.	<a href="http://www.dell.com/downloads/global/products/pedge/en/acoustical-education-dell-enterprise-white-paper.pdf">www.dell.com/downloads/global/products/pedge/en/acoustical-education-dell-enterprise-white-paper.pdf</a>



# Appendix D. System board block diagram

Figure 9. M620 system board block diagram

